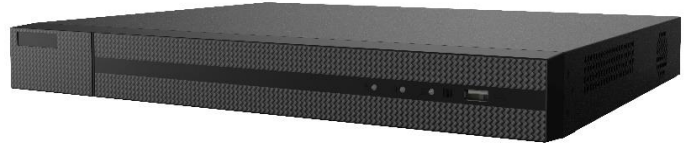


DVR-2XXU-K2 SERIES TURBO HD DVR



Key Features

Video Input and Transmission

- Self-adaptive HDTV/HDCVI/AHD/CVBS signal input
- Up to 4-ch 6 MP IP cameras input
- 8 MP/5 MP/4 MP HDTV video input and live view
- Defogging function enabled for the supported analog cameras
- Long distance transmission over UTP and coaxial cable: max. 800m for 1080p and 1200m for 720p HDTV signal

Compression and Recording

- H.265+/H.265/H.264+/H.264 encoding for the main stream, and H.265/H.264 for the sub-stream of analog cameras
- Connectable to H.265+/H.265/H.264+/H.264 IP cameras
- H.265+ can be enabled to improve encoding efficiency and reduce data storage costs
- Full channel recording at up to 8 MP resolution

Video Output

- Simultaneous HDMI/VGA output
- HDMI output at up to 4K (3840 × 2160) resolution

Storage and Playback

- 1 SATA interface (up to 8 TB capacity per HDD)
- 16-ch synchronous playback
- Smart search for efficient playback
- Supports the 3rd party cloud storage (Dropbox/Google Drive/Microsoft OneDrive)

Smart Function

- Supports multiple VCA (Video Content Analytics) events for both analog and smart IP cameras
- Supports line crossing detection and intrusion detection of all channels, and 2-ch sudden scene change detection
- VCA information overlay in live view and smart playback
- VQD (Video Quality Diagnostics)
- Supports PTZ control via Omnicast VMS of Genetec protocol

Network & Ethernet Access

- Hik-Connect & DDNS (Dynamic Domain Name System) for easy network management
- 1 RJ45 10M/100M/1000M self-adaptive Ethernet interface
- Output bandwidth limit configurable

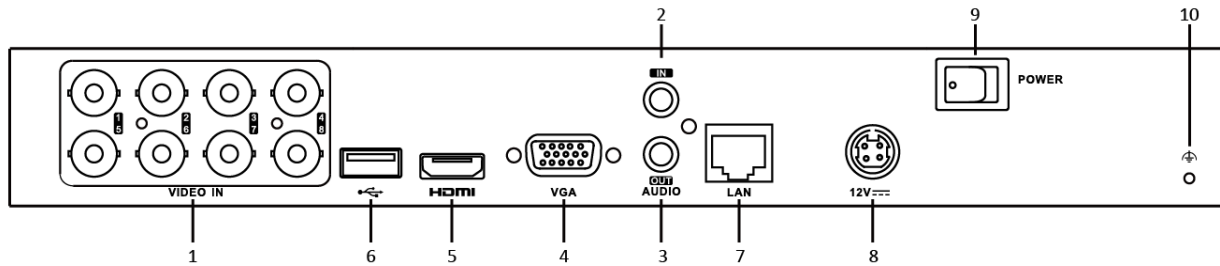
Specifications

Model	DVR-216U-K2		
Video/Audio input	Video compression	H.265+/H.265/H.264+/H.264	
	Analog video input	16-ch BNC interface (1.0 Vp-p, 75 Ω), supporting coaxitron connection	
	Turbo HD input	8 MP, 5 MP, 4 MP, 3 MP, 1080p30, 1080p25, 720p60, 720p50, 720p30, 720p25	
	AHD input	5 MP, 4 MP, 1080p25, 1080p30, 720p25, 720p30	
	HDCVI input	4 MP, 1080p25, 1080p30, 720p25, 720p30	
	CVBS input	PAL/NTSC	
	IP video input	8-ch	
		Up to 6 MP resolution	
	Audio compression	G.711u	
	Audio input/Two-way audio	1-ch, RCA (2.0 Vp-p, 1 KΩ)	
Video/Audio output	HDMI/VGA output	HDMI: 1-ch, 4K (3840 × 2160)/30Hz, 2K (2560 × 1440)/60Hz, 1920 × 1080/60Hz, 1280 × 1024/60Hz, 1280 × 720/60Hz, 1024 × 768/60Hz VGA: 1-ch, 1920 × 1080/60Hz, 1280 × 1024/60Hz, 1280 × 720/60Hz, 1024 × 768/60Hz	
	Encoding resolution	8 MP/5 MP/4 MP/ 3 MP/1080p/720p/WD1/4CIF/VGA/CIF	
	Frame rate	Main stream: 8 MP@8fps/5 MP@12fps/4 MP@15fps/3 MP@18fps 1080p/720p/WD1/4CIF/VGA/CIF@25fps (P)/30fps (N)	
		Sub-stream: WD1/4CIF/CIF@25fps (P)/30fps (N)	
	Video bit rate	32 Kbps to 10 Mbps	
	Audio output	1-ch, RCA (Linear, 1 KΩ)	
	Audio bit rate	64 Kbps	
	Dual stream	Support	
	Stream type	Video, Video & Audio	
	Synchronous playback	16-ch	
Network management	Remote connections	128	
	Network protocols	TCP/IP, PPPoE, DHCP, Hik-Connect, DNS, DDNS, NTP, SADP, NFS, iSCSI, UPnP™, HTTPS, ONVIF	
Hard disk	SATA	2 SATA interface	
	Capacity	Up to 8 TB capacity for each disk	
External interface	Network interface	1, RJ45 10M/100M/1000M self-adaptive Ethernet interface	
	USB interface	Front panel: 1 × USB 2.0 Rear panel: 1 × USB 3.0	
General	Power supply	12 VDC	
	Consumption (without HDD)	≤ 25 W	
	Working temperature	-10 °C to +55 °C (+14 °F to +131 °F)	
	Working humidity	10% to 90%	
	Dimensions (W × D × H)	380 × 320 × 48 mm (15.0 × 12.6 × 1.9 inch)	
	Weight (without HDD)	≤ 2 kg (4.4 lb)	

Applicable Models

DVR-216U-K2

Dimensions



NOTE

The rear panel of DVR-204U/208U-K1 provides 4/8 video input interfaces.

Index	Description	Index	Description
1	VIDEO IN	6	USB Interface
2	AUDIO IN	7	Network Interface
3	AUDIO OUT	8	Power Supply
4	VGA	9	Power Switch
5	HDMI	10	GND